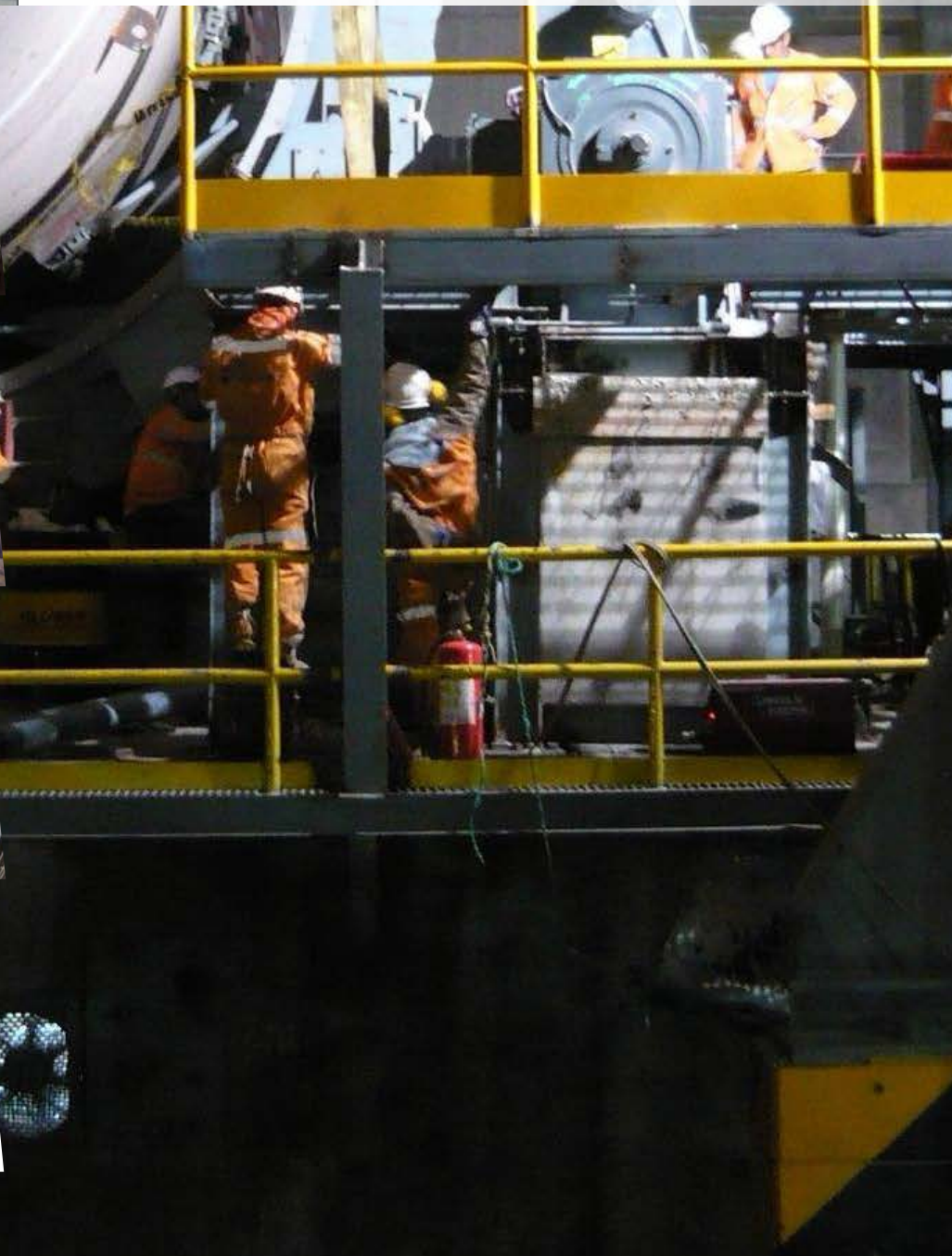




# SERVICE

EXPERTISE | ON-SITE | WORKSHOP REFURBISHMENT | SPARE PARTS

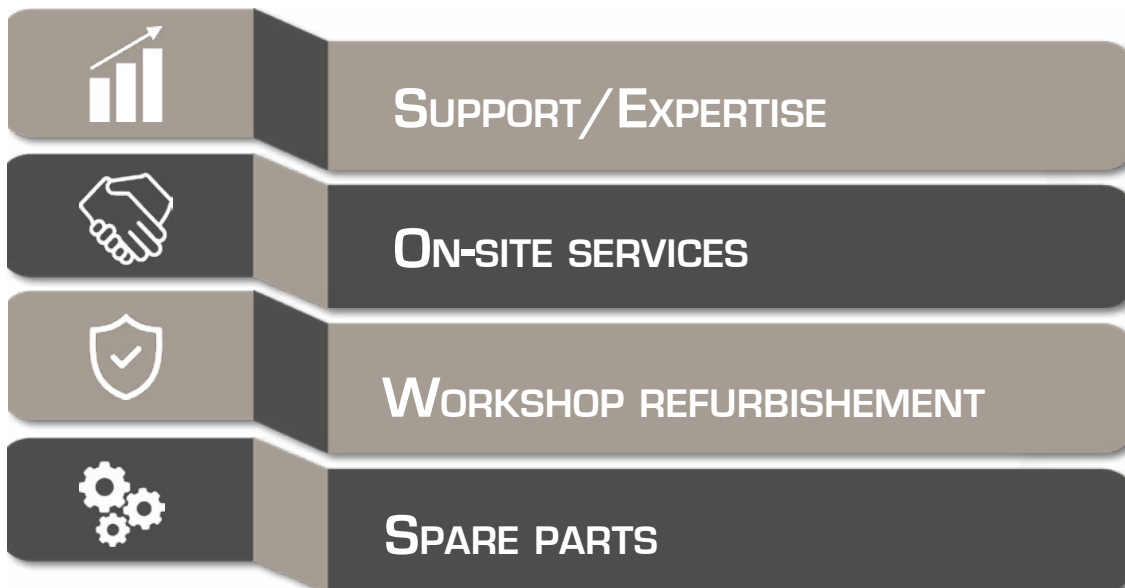


>> One Single Partner for all Your Needs <<

## OUR MISSIONS

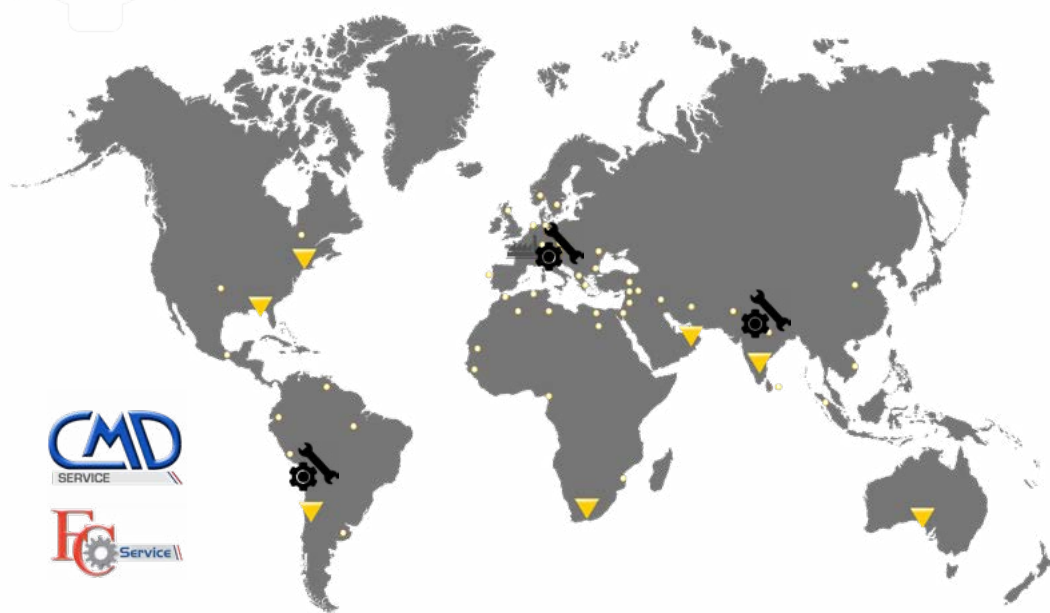
Your goals: Maximized availability / Optimized Operating Costs

Our missions:



## INTERNATIONAL PRESENCE

Over thirty qualified Engineers and technicians within Groupe CIF are able to travel all over the world for operations including, but not limited to, installation and commissioning, inspection, trouble shooting, recommendations & warranty follow-up.



CONTACT:  
[service@cifbussy.net](mailto:service@cifbussy.net)

**SERVICE  
AVAILABLE  
24/24 HRS,  
7 DAYS A WEEK**

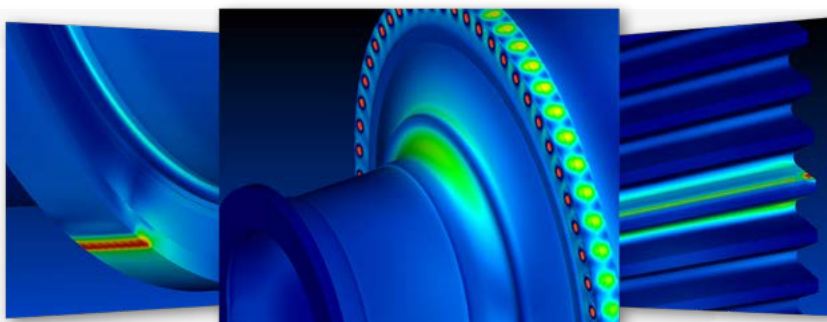
Manufacturing locations Sales agencies Representatives

Service centers Multi-language

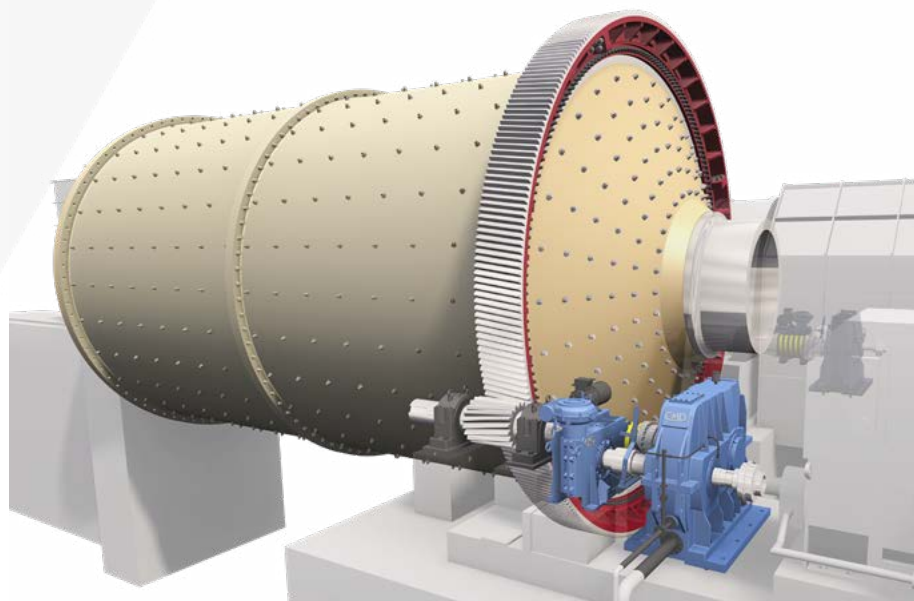




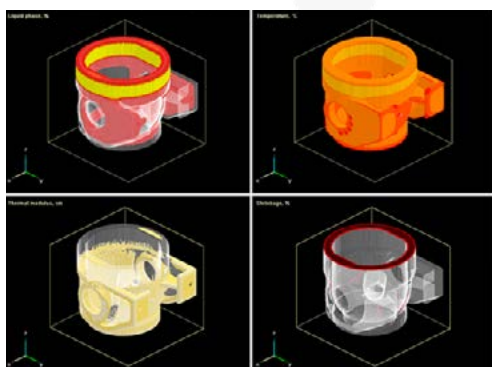
## # DESIGN & CALCULATIONS



- Upgrading
- Finite Element Analysis (FEA)
- Mechanical drive train design  
(open and enclosed gearing)
- Development of custom made mechanical couplings
- Conversion of fabrication to casting  
(iron or steel)
- Technical staff of approx.  
100 engineers/technicians
- Multiple patents each year



## # MATERIAL DEVELOPMENT



- Patented material FerryNod® dedicated to gears
- Solidification and Flow Simulation Modeling
- Full metallurgical test lab

### Gear drive training center or on-site training sessions

- Tube with kiln & mill gears



- Training for gears installation & alignment
  - >> mill ring gear
  - >> kiln ring gear
- Training for pinion alignment
- Training for gearbox & motor alignment

## # PREDICTIVE MAINTENANCE

- On-site monitoring
- On-line follow-up contract
- Assessments/Recommendations
- Possibility to organize preventive and predictive maintenance seminars







## ON-SITE SERVICES



Our specialists within Groupe CIF will provide you with individual technical support for all questions concerning functionality, handling, application and troubleshooting of Mechanical Drives products.



### PERIODIC MAINTENANCE PROGRAM



- Inspections
- First level repairs
- Spare parts storage

### # ON-SITE INSPECTIONS & DIAGNOSIS



US inspection



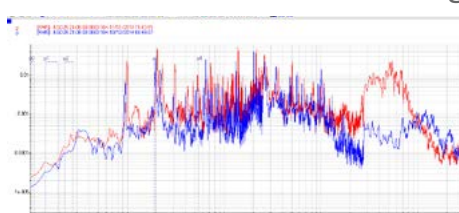
on-site measurement



Split joint plan tightening checking



Endoscopic inspection



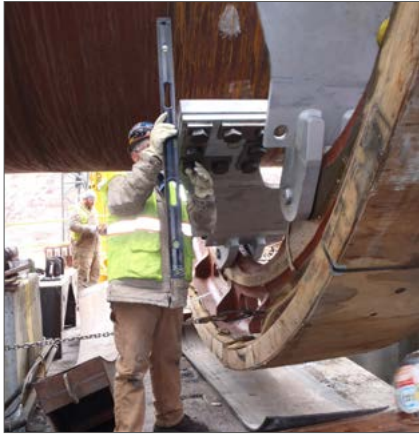
Vibrations analysis & operating conditions



White metal bearing checking







On-site measurements



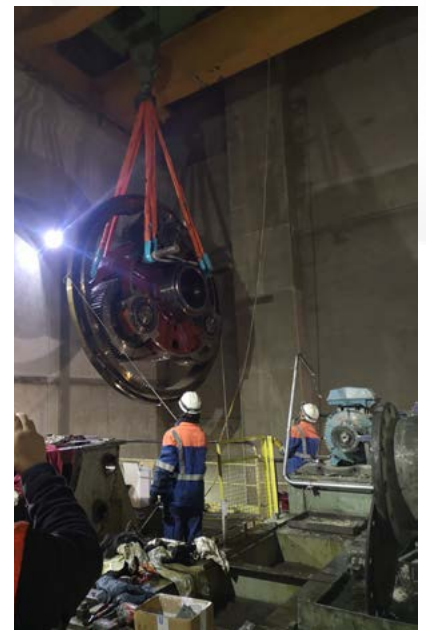
Thickness measurement  
by US

Girth gear reversal

BEFORE



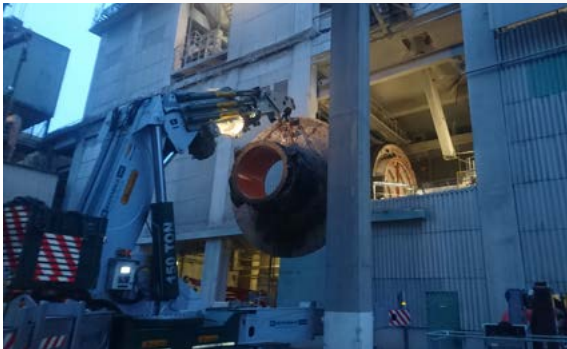
AFTER





## On-site supervision

Total supervision worldwide



## Turnkey installations

■ Provide complete installation team with safety equipment and handling tools for project in EU.

- > Delegation of field engineers for day and night shifts
- > Preparation of installation schedule
- > Provide list of tools and handling equipment
- > Project monitoring



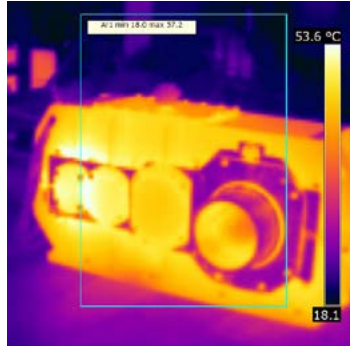


## # PERIODIC MAINTENANCE

- Scheduled inspection services
- Field service on request at customer job site



oil analysis



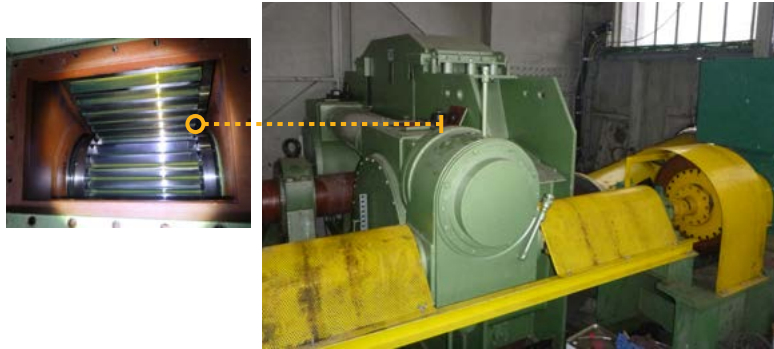
Thermal infra-red camera



## MAINTENANCE CONTRACT BASED ON ANNUAL INSPECTION PROGRAM



- Visual inspection
- Vibration analysis
- Temperature control
- Oil analysis



## # ON-SITE REPAIRS

- Repairs
- Assistance to install spare parts available on site







# WORKSHOP REFURBISHMENT



Refurbishment of all types/brands of gearboxes



Housing replacement    Reverse Engineering



BEFORE



AFTER



A team of technicians and engineers dedicated to refurbishment is responsible for repairing and optimizing your gear, gearboxes, couplings or other mechanical parts of transmission of any brand.

Expertise:

- > US testing
- > MPI examination
- > Vibration measurement
- > 3D measurement
- > Spectral analysis
- > Gear contact pattern
- > Bearing clearances checking
- > Large dimension checking machine

3D measuring machine  
for large-size XXL workpieces





# SPARE PARTS

Need for...



SPARE PARTS

✓ Contact us!

## SPARE PARTS PACKAGES

- Maintenance kit proposed to increase product life

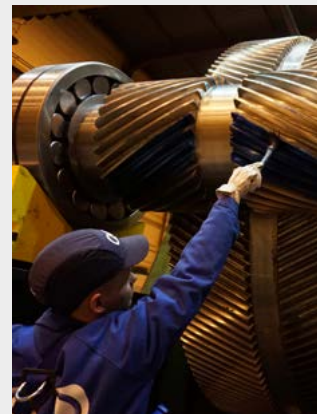


Lubrication units



## UPGRADING & SERVICING

- CMD is able to upgrade gearboxes with CMD components to extend the life of the machine, increase capacity and reliability
- CMD has 60 years of experience for all CMD, Citroën, Durand gear units to provide identical or upgraded components



White metal bearings





SCAN THIS QR CODE

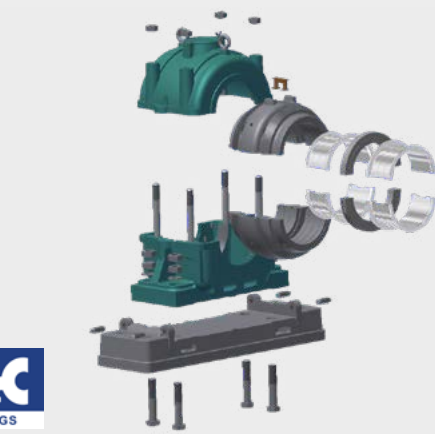
FOR MORE INFORMATION >>



## MODERNIZATION SERVICE

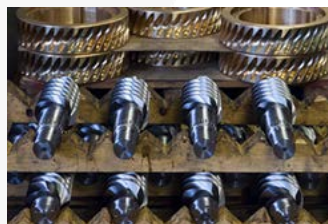
Upgrade all brands of  
D drop-in solutions to  
your gears, increase  
life of your equipment.

of drawing archives  
, E&R, Messian,  
to manufacture 100%  
ed spare parts.



## ADVICE & OPTIMIZATION SERVICE

- Increase equipment capacity
- Improve availability of machinery



Worm gears



1/2 hub couplings



Pinions



Rotors



Compagnie Industrielle et Financière de Bussy

Usines de Bussy  
F-52300 VECQUEVILLE  
Tél. : +33 (0)3 25 94 04 24  
[www.legroupecif.com](http://www.legroupecif.com)



March 2020



**FERRY-CAPITAIN**  
Usines de Bussy

F-52300 VECQUEVILLE  
Tél. : +33 (0)3 25 94 04 24  
[www.ferrycapitain.fr](http://www.ferrycapitain.fr)



**CMD**

36, Avenue de l'Europe  
Immeuble Étendard BP43  
F-78142 VELIZY-VILLACOUBLAY  
Tél. : +33 (0)1 34 63 12 24  
[www.cmdgears.com](http://www.cmdgears.com)



**FCMD**

Schmiedestrasse 5  
D - 45527 HATTINGEN  
Tel. : +49 (0) 2324 686 520  
[www.fcmd-gmbh.de](http://www.fcmd-gmbh.de)



**FAD**

17, Rue Pierre Bériot  
BP 329  
F-59723 DENAIN CEDEX  
Tél. : +33 (0)3 27 21 44 00  
[www.fad-denain.com](http://www.fad-denain.com)



**ATELIERS ROCHE**

15, Boulevard Marcelin  
Berthelot - BP50  
F-51052 REIMS CEDEX  
Tél. : +33 (0)3 26 07 17 65  
[www.ateliersroche.fr](http://www.ateliersroche.fr)  
[www.roche-meshmaker.com](http://www.roche-meshmaker.com)



**AHD**

11, Avenue du Général  
Sarrai  
F-52100 SAINT DIZIER  
Tel. : +33 (0)3 25 56 75 00  
[www.ahd.fr](http://www.ahd.fr)